

LE-Q8C

Compact & Rugged Wide-band LTE Antenna

Product Description

The LE-Q8C is a compact and rugged industrial-grade antenna with 2G/ 3G/ 4G coverage. The outstanding antenna efficiency on all cellular bands and waterproof design makes it easy to install and able to meet commercial and industrial standards.

Highlight

- ✓ Compact design combined with high performance antenna element
- ✓ Separated RF adapter and cable design for installation flexibility.
- ✓ Cable direct entry through a cable terminated by a RF connector is optional.
- ✓ Apply weather-resistance antenna enclosure material for harsh environment

Feature

- ✓ Central screw mount, easy installation.
- ✓ IPX7 fully waterproof
- ✓ Support 2G /3G /4G cellular frequency
- ✓ RF independent ground



Mechanical Specification

Dimension	41.5mm(dia.) x 97.5mm(including the length of connector)
Mounting	Through hole mount
Cable	RG-174/ LMR-100/ LMR-195
Connector	N type female - ** Cable direct entry through a cable is optional
Enclosure	ASA material - Industrial-grade plastic material
Operation Temperature	-35°C ~ +85°C
Storage Temperature	-40°C ~ +85°C
Weight	84.5g

Electrical Specification - Cellular

Frequency	698~960 & 1710~2170MHz
Gain	4 dBi (Peak) 3.15 dBi (Average)
Efficiency	74.3% (Peak) 65.7% (Average)
Impedance	50Ω
VSWR	<2.0

LE-Q8C

Industrial Rugged LTE Antenna



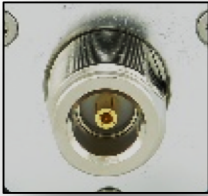
Proprietary Design

LE-Q8C's unique radome design ensures the operability and RF radiation.



Seamless, Integrally Formed Radome

The housing provides full coverage to the base, allowing excellent water-proof capability. The design is also highly tamper-proof.



Central Mount, Separated Connector

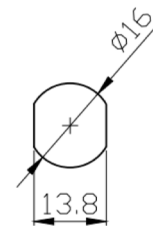
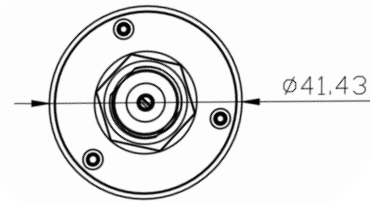
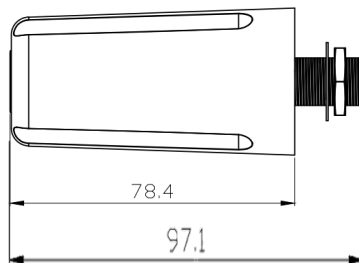
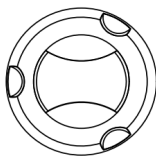
LE-Q8C has central mount N-type female connector, can be connected to an corresponded adapter cable, enabling flexible setup. Cable direct entry through terminated by a RF connector is optional



Ground Independent

LE-Q8C is ground independent for fixing on any surface with consistent performance.

Antenna Physical Drawing



NOTE: Cable direct entry through a cable terminated by a RF connector is optional.

Recommended Mounting Hole